

PRESIDENT'S REPORT

2018-2019 ACADEMIC YEAR



Monsignor Stuart Swetland

As I often tell Donnelly's talented team of faculty and staff, for our college to continue to grow and thrive, we must "dream dreams and see visions" (cf. Joel 2:28, Acts 2:17). For so long we have been dreaming big dreams, and now we are starting to see those dreams become a reality.

If you have not yet had a chance to drive past campus, I encourage you to do so. The new academic building is well underway and on track for a

Fall 2020 opening. In fact, at this time we are in the midst of recruiting the first class of freshman that will start their academic journeys at Donnelly in our new home.

Part of making the dream of a new academic building a reality has been the overwhelming generosity of our friends, supporters and community. For example, we have received 10 seven-figure commitments to our campaign, completed a \$1 million Mabee Foundation

Challenge in October and negotiated two New Market Tax Credit allocations that will provide a net investment of \$4.5 million in capital improvements. Due to the outstanding response and generosity of our community, we have raised almost \$33 million toward our total project need of \$34.5 million. We pray that our many alumni and friends will help us cross this important finish line in 2020!

These investments made it possible to complete Phase II of our Campus Master Plan, renovating the final two floors of Marian Hall to gain 11,000 additional square feet of academic space. Even more exciting, these investments have allowed us to begin executing the third and final phase of the master plan—demolishing a vacant residence hall, constructing a parking garage and breaking ground for our new 72,000 square foot academic building.

Also, during the 2018-19 academic year, we celebrated the following accomplishments:

- We graduated our largest class in the past decade, with 106 graduates, including our first 15 Registered Nursing graduates.



- The Higher Learning Commission reaffirmed our accreditation through 2022-23.
- The College's first-ever mascot was unveiled—the Donnelly Dragon.

I want to say more about our graduates. Our associate and bachelor's degree programs and our Practical and Registered Nursing programs provide our students with a solid academic and spiritual foundation for continued study as well as the skills and credentials they need to secure good jobs and contribute to the community. Of our 2018-19 graduates, 63% said they planned to continue their education, with 46% of those students planning to complete a bachelor's degree and 41% planning to complete a master's or doctoral degree. In addition, 88% of our 2018-19 graduates were employed at the time of graduation and 82% said they would recommend Donnelly College to others. Recent graduates agreed that Donnelly effectively prepared them for working with diverse colleagues, for understanding ethical behavior and social responsibility, and for exercising problem-solving and decision-making skills.

With accomplishments like these, Donnelly continues to move closer to our institutional vision of being the

most accessible and transformative Catholic College in the country. This progress is only possible with the support of our donors and volunteers, the hard work of our students, and the dedication of our faculty and staff. We hold each of them in our prayers and ask you to do the same. We remain especially thankful for the donors listed on the next few pages who supported our mission and students this past fiscal year. We could not continue to offer affordable Catholic private college tuition rates and top-notch academic programs and support without their generosity.

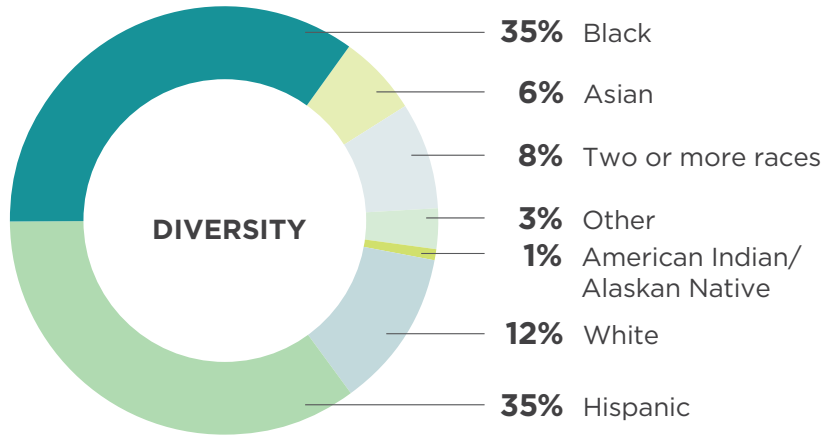
As we continue to dream dreams and see visions, we hope you feel called to join us on the journey. Whether you choose to invest in our mission, partner with our academic programs, host our students as interns or hire our graduates, Donnelly would love to count you as a partner in our work.

May God bless you and yours in 2020! **D**

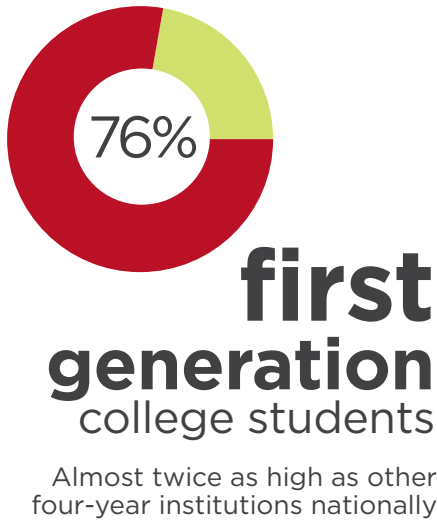
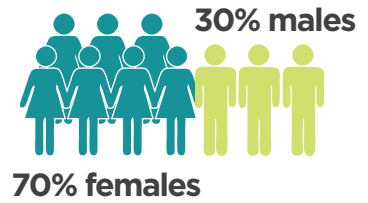
Msr. Stuart W. Swetland

Monsignor Stuart Swetland
President

OUR STUDENTS

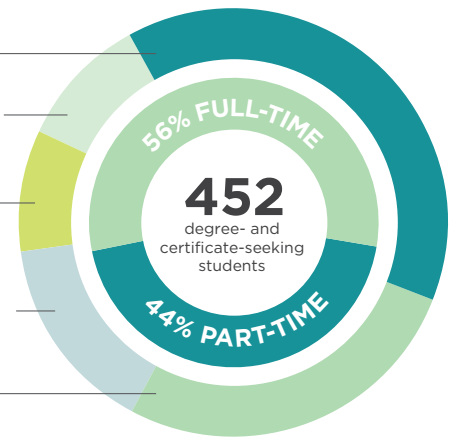


28
average age



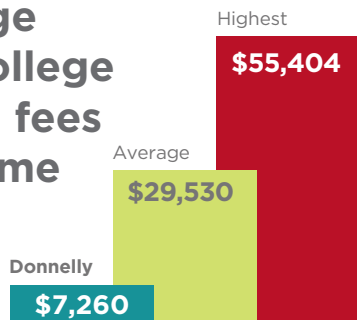
PROGRAM ENROLLMENT

- 39% Associate Degree
- 10% Bachelor's Degree
- 9% Correctional Facilities Program
- 15% Gateway to College
- 27% Nursing



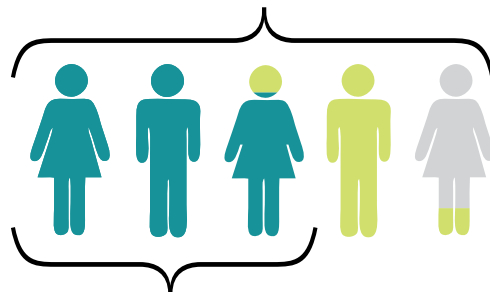
BY THE NUMBERS

U.S. average Catholic college tuition and fees for a full-time student



Sources: National Center for Education Statistics & Association of Catholic Colleges and Universities

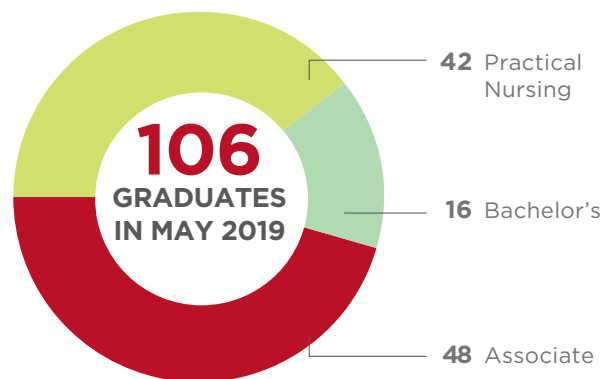
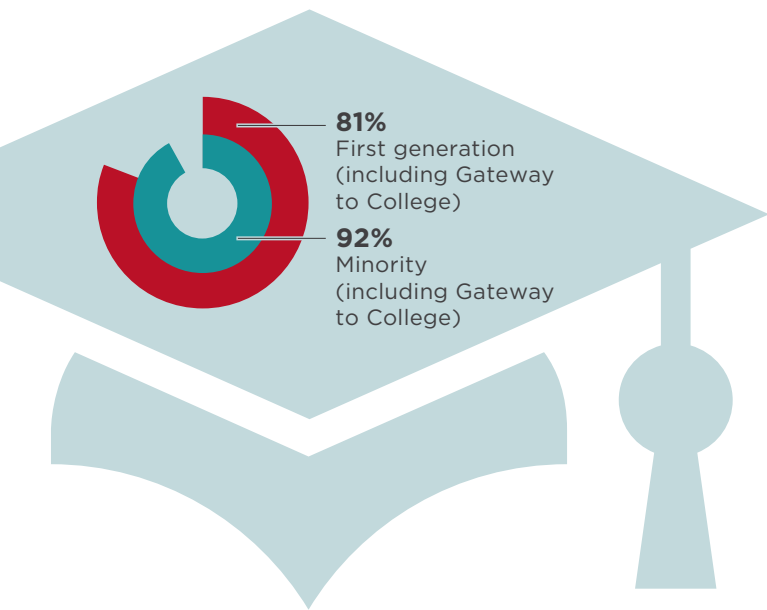
83%
OF STUDENTS RECEIVE SCHOLARSHIPS/GRANT AID



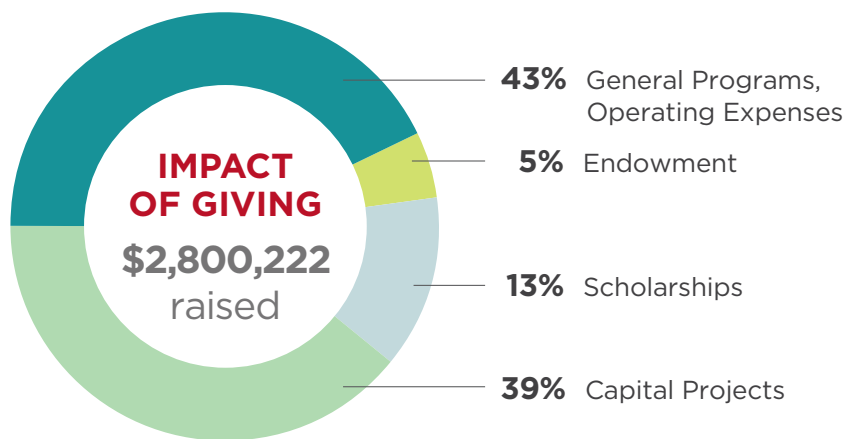
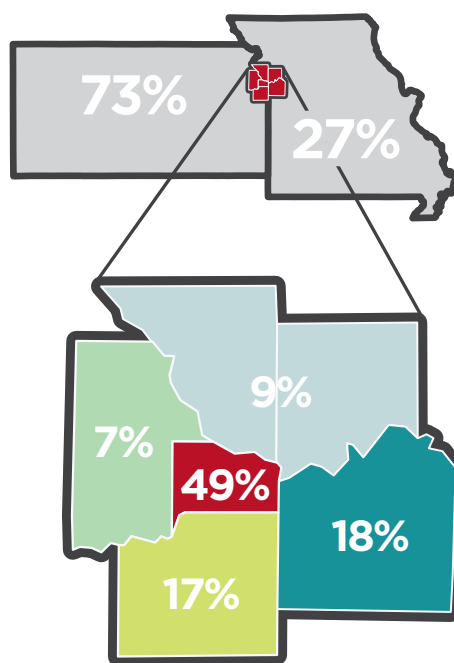
\$1,738,808
total scholarships and institutionally based aid
\$5,451
average award

\$916,342
total Pell Grants distributed
\$4,146
average award

57%
OF STUDENTS RECEIVE PELL GRANT ASSISTANCE



On average, Donnelly's classes have **13 STUDENTS**



SOURCES OF GIFTS

