

Adjunct Faculty Workshop

Lisa Stoothoff, VPASA

Donnelly College January 13, 2020

Faculty Handbook/Expectations



OFFICE HOURS



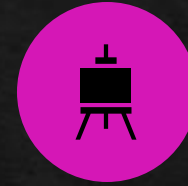
PROFESSIONAL
DEVELOPMENT



ACADEMIC
RIGOR



SYLLABUS



CANVAS



EMPOWER



VIA

Professional Development Funds

Faculty Senate Executive Board

Joe Multhauf x290

Ana Maradiaga x293

Gretchen Meinhardt x221

Each AY, faculty may place a portion of their PD funds into an adjunct account.

Adjuncts may apply for some funds to cover the cost of PD.

Please contact a faculty senate executive member for more details

ACUE 3 CR
Graduate
Course \$100
stipend

Effective Teaching Pedagogy



Office Hours

While you are not required to hold regularly scheduled office hours, please try to be available before or after class or by arrangement.





Course Expectations



Assessment of Student Learning



DCLO, PLO, SLO-really?



Attendance Policy

Syllabus-Use the
template provided
by Department
Director
How much can I
change on
the syllabus?

Service Learning

- ◆ Apply to have your course considered for the SL designation and receive \$250 that semester. When students complete four SL courses in a degree program, they receive an honor cord at graduation.



Why
attendance
matters!

Financial Aid

Academic Rigor

Assessment data

Community

Retention

Empower-Student Information System

Track daily attendance and mid-term/final grades



Canvas-Course Content-Grades

- <https://donnelly.instructure.com>



VIA-Assessment of DCLO



Empower/Canvas/VIA

Mission. Vision.
Values

What is a Catholic College?

Is Catholicism part of the curriculum?

What faith-based activities and clubs are at Donnelly?

What if I'm not Catholic, or not Christian?

Thank you
for attending!

- ◆ For further assistance please contact:
- ◆ Lisa Stoothoff Rm 206 913-621-8726
- ◆ Annie Dreher Rm 206 913-621-8777
- ◆ www.donnelly.edu